



Bacula Systems Enterprise Edition

Enterprise-Ready Open Source
Backup and Restore

Who am I

- Arno Lehmann
- One of eight founders of Bacula Systems SA
- Working with Bacula since 2004
- Thanks Erol, but I'm much less active in the community recently. Unfortunately.
- When thinking about Backup or Bacula, I do think in English. Sorry.



Who is Bacula Systems?

Bacula Systems™ is the **leader** for Open Source network backup and restore software, combining Bacula's enterprise-class Open Source and open standards software with first-class service and support.

Bacula increases reliability and can cut IT backup costs significantly.



What does Bacula Systems provide?

Bacula Systems™ is the commercial arm of the Bacula open source project, providing training and consulting services. The heart of its business is the provisioning of expert support services, and the **Bacula Enterprise Edition**: both provided through the **Bacula Systems Subscription**.

This means that Bacula Systems customers only pay for real service, and benefit from the critical safety insurance that the service brings.

No license fees. Bacula Systems only brings direct value to the customer.



Why Bacula Enterprise Edition?

Bacula Systems™ ensures that Bacula Enterprise Edition is fully certified and tested for enterprise use. This means that the software is **stable and safe** for professional use.

Bacula Systems invests heavily in the ongoing improvement of Bacula Enterprise Edition, and Enterprise Edition versions are maintained for a minimum of 4 years.

Enterprise users are recommended to use Bacula Enterprise Edition for backing up mission-critical data.



Why Bacula Enterprise Edition?

- Receive Patches: Fast bug fixes and security errata
- Receive Updates: Regular updates that provide general enhancements, new features, etc.
- Enterprise Edition provides upgrades and new versions at NO COST. All costs are included in the Subscription.
- Unlike proprietary vendors, with Bacula Systems you will never be charged for software upgrades.



Enterprise Edition 4.0.x – Additional Details

- Tested and Certified
- Windows plugins (Registry, Systemstate, Active Directory, SharePoint)
- AFS support
- Linux Bare Metal Recovery static File daemon binaries
- Bacula Systems supplied bug fixes
- Bacula Enterprise G.U.I.



Enterprise Edition 4.0.x – Additional Details

- Significantly increased software stability (essential for mission-critical environments)
- Bacula Systems Subscription included, including access to the rapid-response data-restore 'SWAT Team'.
- Windows Bare Metal Recovery also available*
- Multi-Director GUI also available*

* may cost extra – contact sales for details



Why Bacula Systems?



- **Better Software**

- Peer Review
- Very high quality code
- Innovation through OSS Community



- **Better Service**

- More responsive
- Transparency
- Highest-level expertise

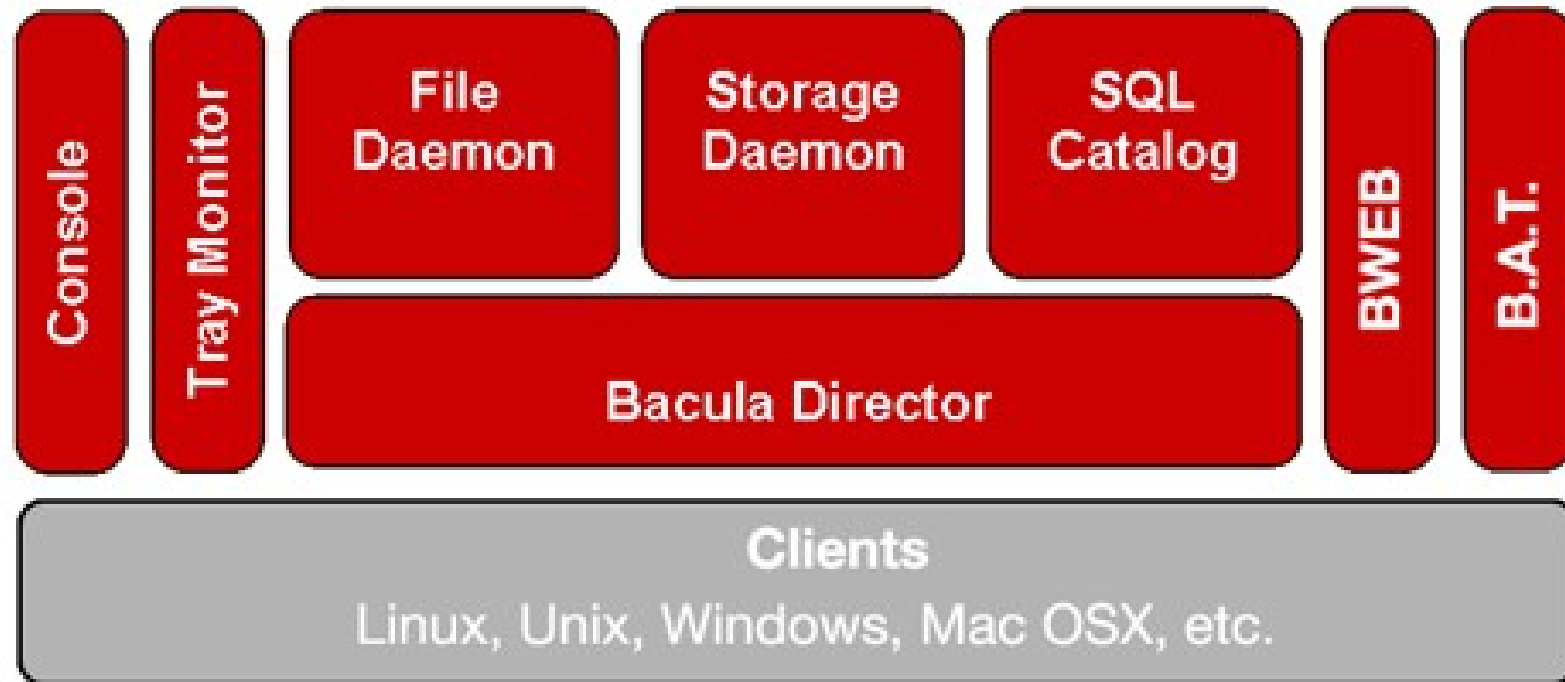


- **Better Value**

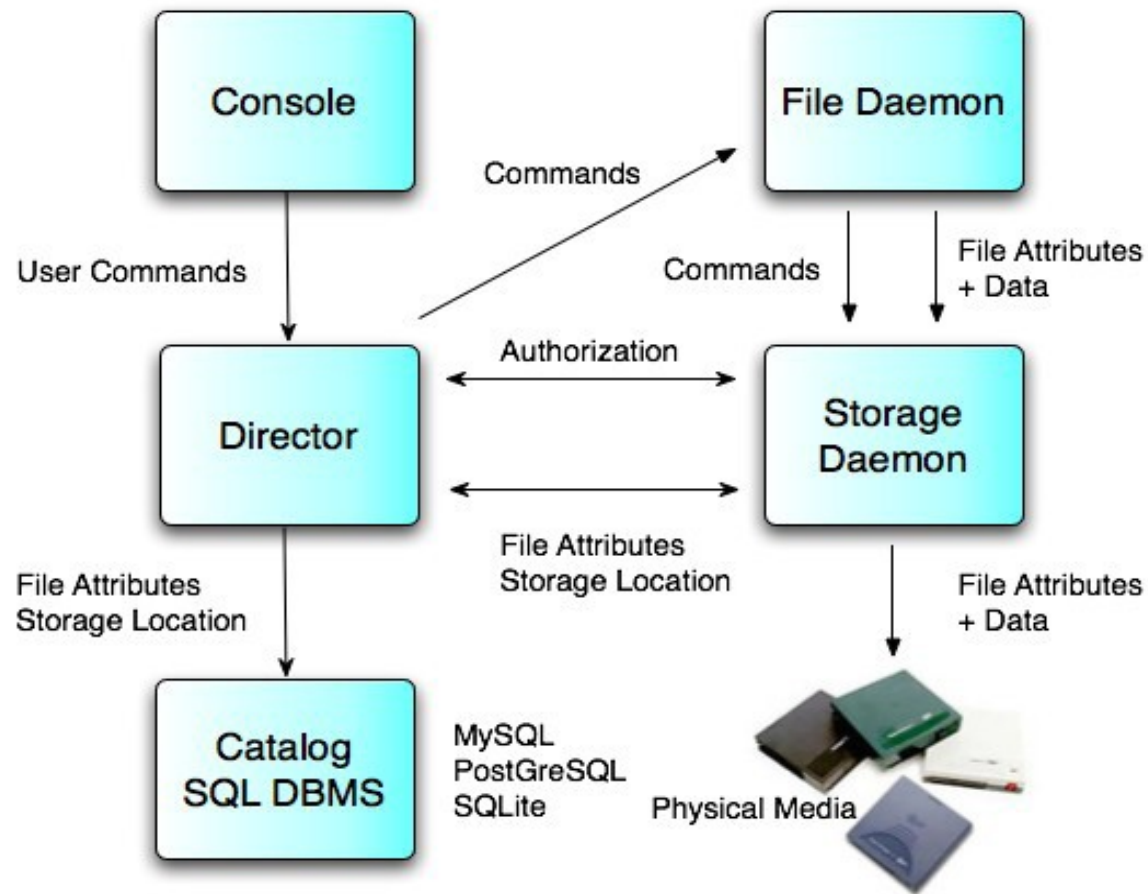
- Zero License Fees
- Freedom from Vendor Lock-in
- Elimination of Linear Costs



Simple, modular design.



Bacula Enterprise Backup Platform



Main components



Bacula Enterprise Edition – General Feature Set

- Bacula Enterprise Edition is a reliable, highly scalable, modular and multithreaded open source backup and data verification solution. With advanced levels of security built into every layer of its modern design, and industry-standard SQL database, Bacula is used by thousands of enterprises all over the world. Some of the reasons for Bacula's widespread acceptance in mission critical environments are:
 - Reductions in costs by a factor of 10 compared to proprietary products
 - Zero-cost licenses
 - Easy to set up
 - Highly extensible and modular
 - Configurable for high availability in a clustered environment
 - Helps meet regulatory requirements



Additional Features

- A central server and catalog with distributed backup
- All components communicate via the network and are deployed separately.
- Internal scheduler for automatic and simultaneous job execution with priorities.
- Interactive restore of one or more files from:
 - current backup
 - prior backup of time and date
 - list of files/directories to restore
 - restore by JobId
- Simple administration with consoles (command line, GUI, and web)



Additional Features (continued)

- Labeled Volumes, to prevent accidental overwriting
- Support for ANSI / IBM labels
- Machine independent Volume data format - extensible
- Support for Unicode on Win32; UTF-8 on Unix
- Rescue CDROM for “bare metal” recovery.
- Deduplication at file-level



New Feature: vss://@SYSTEMSTATE

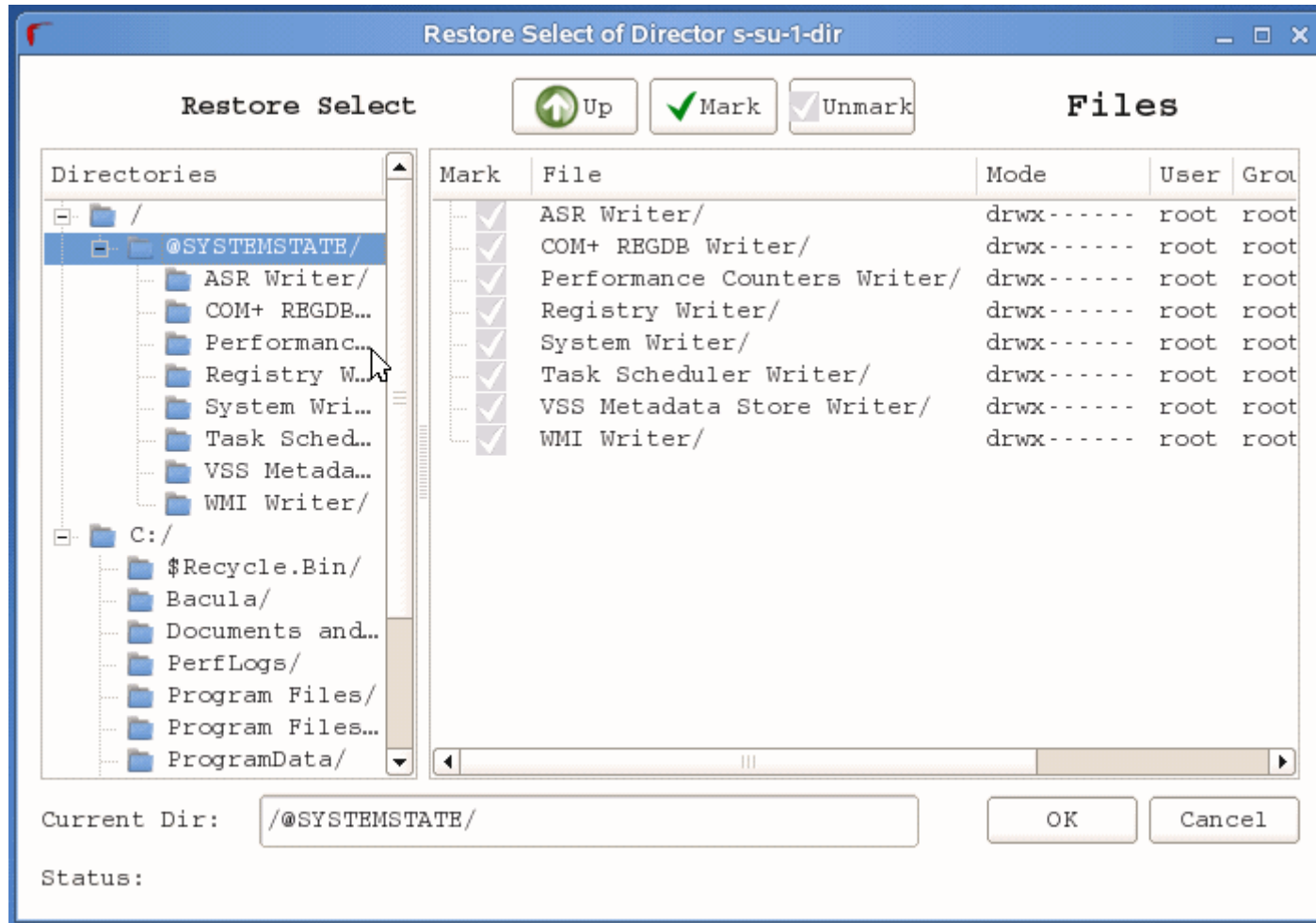
- Capture Windows' System State (Registry and critical files)
- Example:

```
File Set {  
  Name = "WinSysState"  
  Include {  
    Options {  
      Signature = MD5  
    }  
    File = "C:/"  
    Plugin = "vss://@SYSTEMSTATE/"  
  }  
}
```

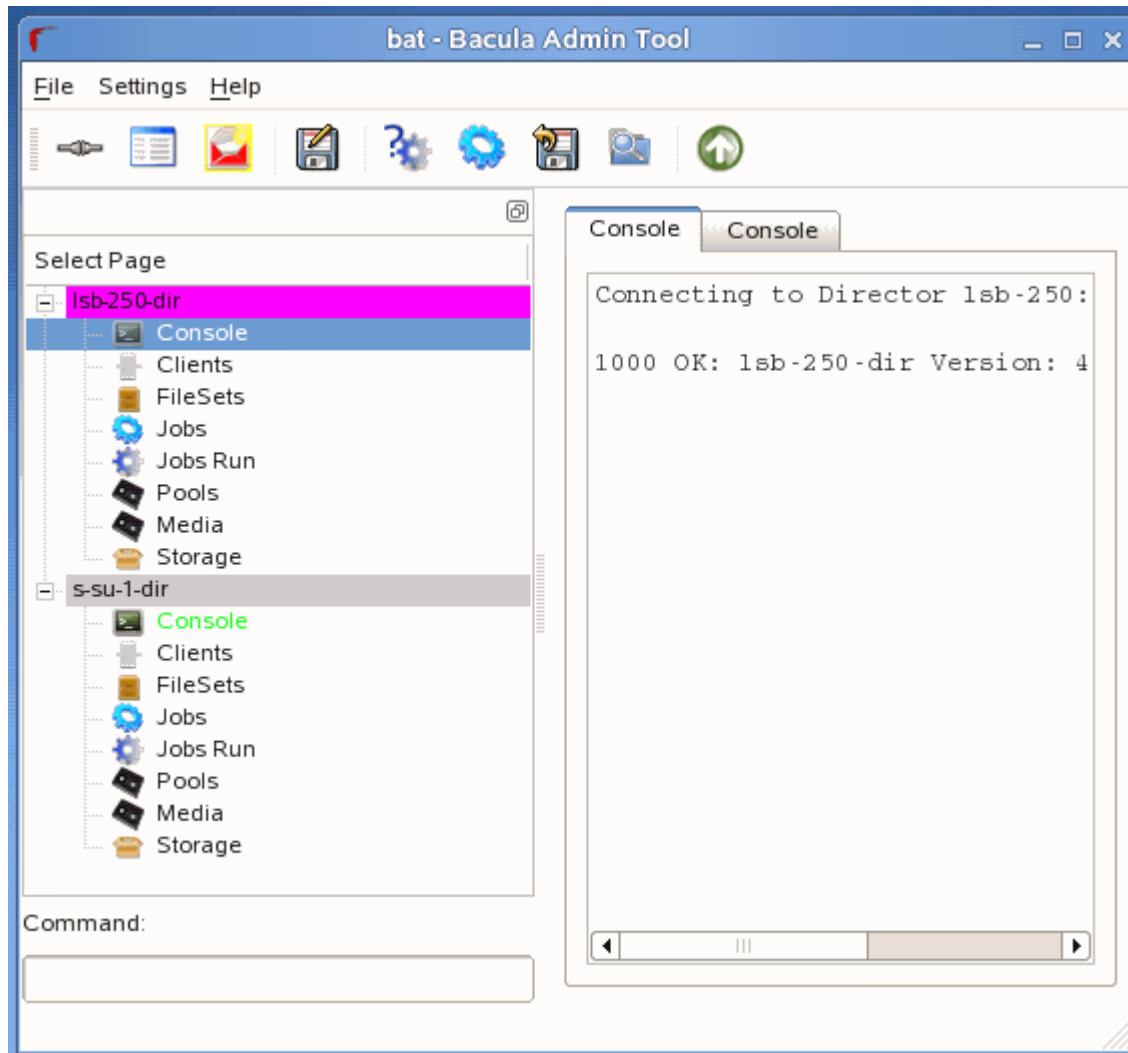
```
cwd is: /  
$ ls  
@SYSTEMSTATE/  
C:/  
$ cd @SYSTEMSTATE  
cwd is: /@SYSTEMSTATE/  
$ ls  
ASR Writer/  
COM+ REGDB Writer/  
Performance Counters Writer/  
Registry Writer/  
System Writer/  
Task Scheduler Writer/  
VSS Metadata Store Writer/  
WMI Writer/  
$ cd "System Writer"  
cwd is: /@SYSTEMSTATE/System Writer/  
$ ls  
System Files/  
instance_{5D1C2AD4-8B79-4097-83B6-79144BCEF427}
```



@SYSTEMSTATE in B.A.T.



Multi-director B.A.T.



- Manage more than one Bacula instance



Multi-Director bweb

- Manage multiple sites
- Group clients across directors
- Manage jobs on several directors
- Enhanced statistics
- Statistics for several sites in one front-end
- Centralized, customized reporting

Sorry, no screenshots yet :-)



Windows Bare-Metal-Recovery

- An additional set of software and procedures
- Available for Subscription Customers
- Restricted to certain use cases
- Allows recovery of complete windows installation without installing base OS first
- Requires Bacula configuration changes
- Deployment through Bacula
- Wizard-like setup and recovery operations



WinBMR screenshots



Bacula Subscription Components

Technical Support

Maintenance Guidance

Certified Software



Who's Using Bacula Systems?



SdV Plurimédia, Strasbourg, France



"Bacula Systems Professional Services has allowed us to make the transition from proprietary backup software, and escape vendor lock-in. Its backup solution is safe, dependable, and delivers high performance.

Bacula Systems support services are very high quality"

- Salim Gasmi, CTO, SdV Plurimédia

With more than **1000 servers** deployed, **SdV** provides Internet solutions for high profile customers. This includes international firms such as **BNP Paribas** and French daily newspapers including **Le Figaro**. With **Bacula Systems**, SdV ensures complete data backup, protection, and 24/7 uptime.



Q: Why Bacula?

A: Industry Leading Support.



*“We’ve found an enterprise class scalable solution, with zero-cost license and **superior professional service from the expert developers behind the technology.**”*

– Klaus Horak, Director of Technology, **Bank Austria**

- Bacula Professional Support Engineers are *experts in backup technology*

	Standard	Bronze	Silver	Gold
Support Channel	Web	Web and Phone	Web and Phone	Web and Phone
Authorized Contacts	1	2	3	5
Response Times	(24/7 response contracts also available on request)			
Severity 1	1 Business Day	6 Business Hours	4 Business Hours	1 Business Hour



Lowering TCO: Bank Austria



- Bank Austria is the largest bank in Austria.
- Bank Austria employees 15,000 staff

Challenge:

- Needed to significantly reduce IT costs

Solution:

- Needed replacement for expensive Legato Technology

Benefits:

- Increased reliability and better exploitation of hardware
- No vendor lock-in
- Estimated savings of **390 thousand** over next five years

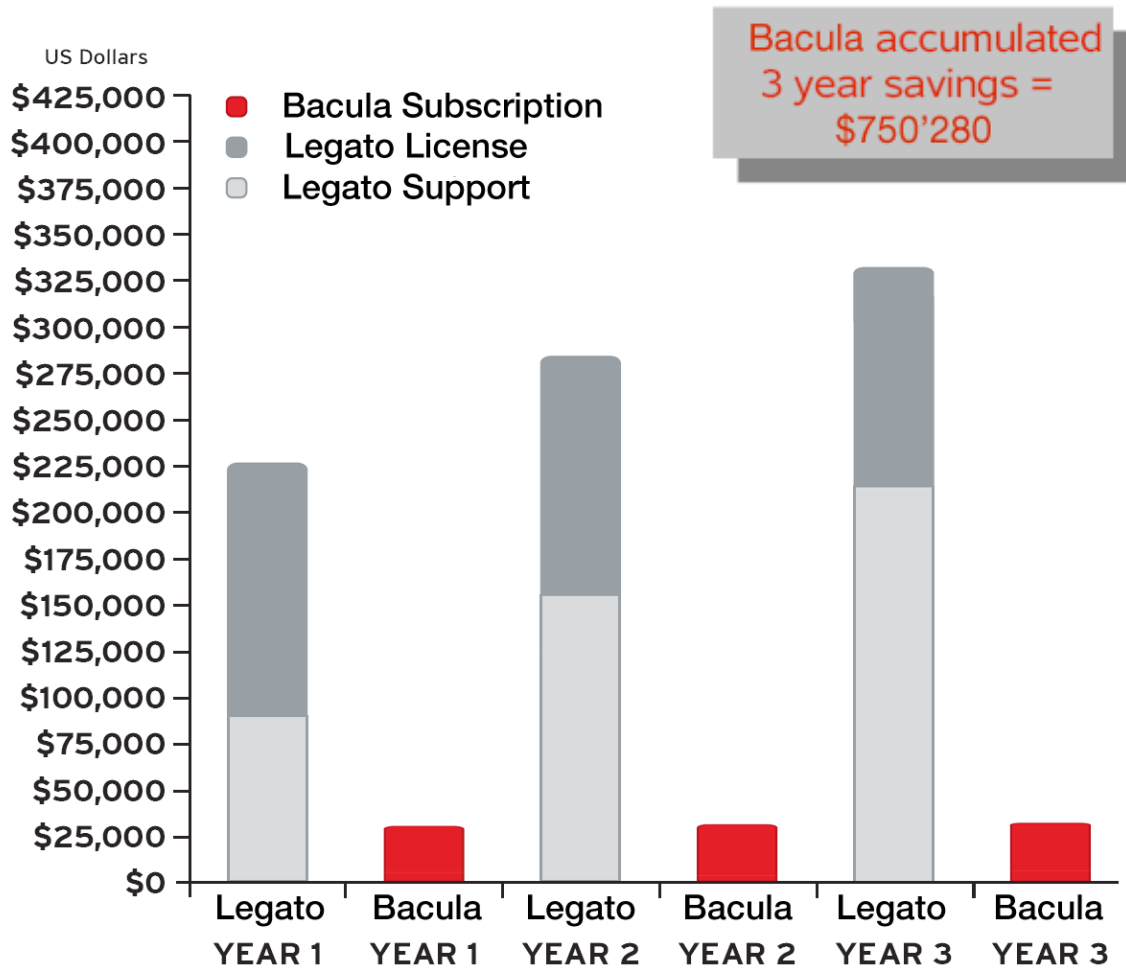
“Bacula Enterprise Edition was able to deliver the performance that was required and had the professional support necessary to enable us to confidently deploy the software in a production environment.”

Klaus Horak, Manager of IT Solutions



Q. Why Bacula Enterprise Edition?

A: Significantly Lower TCO.



“With Bacula's solution, we experienced a significant turnaround in reliability. Thanks to its modern architecture, Bacula has provided us with the ability to offer advanced services to our customers”

- Neil Lathwood, IT Director of UKFast



Growing Datacenters: Netlog



Netlog is an online social portal, and has more than 63 million members throughout Europe

Challenge:

- Data volume constantly growing; needed a solution that scales very well, yet flexible enough to support its many different systems.

Solution:

- Support contract with Bacula Systems

Benefits:

- Netlog now relies on Bacula Systems' technology and support services to meet its mission-critical data backup requirements.

*“As we grew, backups were taking longer and longer to complete. We then decided to take a support contract with Bacula Systems. They have helped us in optimizing our configuration, and now backups are completed almost **twice as fast** as before”.*

Nicolas Van Eenaeme, Director of ITS, Netlog



What's in a Bacula Systems Subscription?

- **Highest-quality support:** From the Bacula support team and its lead developers
- **Product access:** Bacula Systems Enterprise Edition; Certified Binaries; documentation
- **Updates:** Regular updates providing version upgrades, new features, etc. Never be charged for upgrading software!
- **Patches:** Fast bug fixes and security errata
- **Flexibility:** Subscriptions are not version-specific, so access to, and support for previous version is included
- **Bacula Customer Support Portal:** Connect directly to Bacula support staff if necessary, open and track support cases in real-time, and download certified patches and updates
- **Support:** Multiple support services providing unlimited incidents and coverage up to 24x7 with 1 hour response
- **Long term stability:** Multi-year support and update policies for all Bacula Systems software



New Offer: Lite subscription

- Limited range of platforms (RHEL and Windows)
- Limited number of clients (max. 10)
- Support via Web or Email
- Otherwise, normal “Standard” subscription, only cheaper, including BSEE binaries
- A solution focused on **small companies** and
- Business opportunity for **Partners** selling to those



New Offer: Enterprise Bugs

- Advanced access to bug tracking and patches – without the need for full Bacula Systems subscription
- Only for bugs, not consulting services or general support questions
- Different levels depending on user needs:
 - **Community**: no charge, fixes in released versions
 - **Basic**: small users, small charge, access to fixes for self-submitted and security related bugs
 - **Enterprise**: large users, access to all patches
- Currently planned - upcoming



Bacula Systems Enterprise Edition Certified Training Services

- **Current Course Offerings**
 - Bacula Introduction Course
 - Bacula Advanced course
- **Public Training**
 - Regularly scheduled in Europe
- **Onsite Training**
 - Cost effective for larger development teams
 - Reduce travel and disruption
- **Certification Exam Available**
 - Guaranteed level of technical competence



Bacula Enterprise Edition: Summary

Reliable

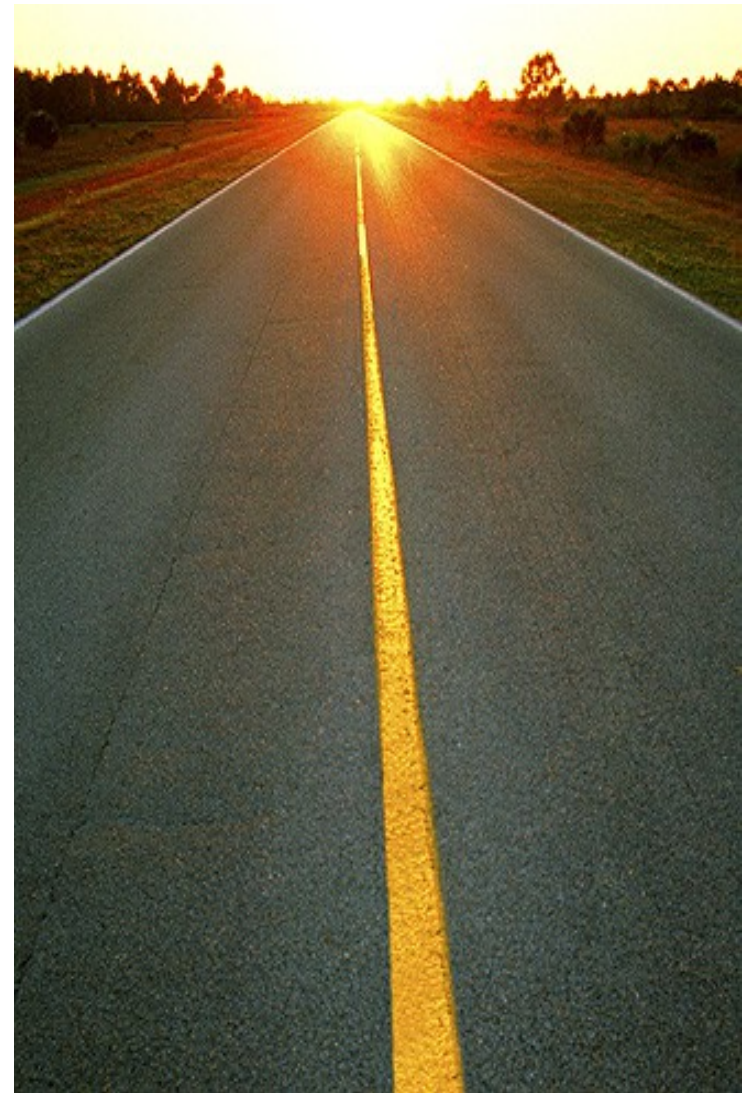
- Certified
- Highly Stable
- Massively scalable
- Version Support for 4 years

Open

- Unparalleled Flexibility & Control via Open Source
- Open standards-based

Economical

- Significantly lower Total Cost of Ownership
- No license fee
- Unlimited CPU's, unlimited clients, unlimited servers, unlimited data.



For more information:

Ask Questions now

or

<http://www.baculasystems.com>

